

Gold Standard

Sample Bubba Kush

Strain

0.00%	17.93%	21.35%
Δ 9 THC	Total CBD	Total Cannabinoids
0.53 AW	Pass	213.5
Water Activity	Moisture	mg / g Total Cannabinoids



Sample ID **20113000724**

Matrix Flower

Metric

Harvest/Prod Date

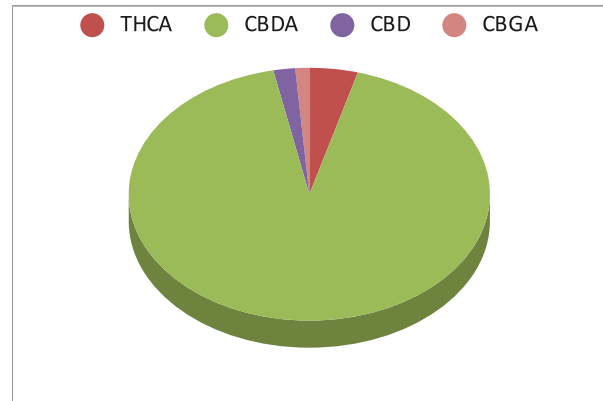
Report Created 12/1/2020

Results Valid Until 12/1/2021

Sample Extracted
11/20/2020 11:10


Sample Analyzed
11/20/2020 17:26

Cannabinoids	%Weight	mg/ gram	LOQ(% w/w)
Δ 9 THC	0.00	0.0	0.1
THCA	0.93	9.3	0.1
CBDA	19.74	197.4	0.1
CBD	0.42	4.2	0.1
CBN	0.00	0.0	0.1
‡ Δ 8 THC	0.00	0.0	0.1
‡ CBC	0.00	0.0	0.1
‡ CBGA	0.27	2.7	0.1
‡ CBG	0.00	0.0	0.1



Total THC and Total CBD are calculated values per OAR 333-064-0100. Cannabinoid values for plant matter samples are reported on a dry weight basis. Water activity action level is 0.65Aw. LOQ= Limit of Quantitation. NR=Not Reported 0.00 = Not Detected above LOQ

[Rogue Research Lab LLC](#)
[218 E. Main Street, Rogue River, OR 97537](#)
[Tel. 541-582-1962](#)
[ORELAP 4107 OLCC 101050708B](#)
[rogueresearchlab.com](#)


 Craig Berry - Lab Director

Results pertain to submitted samples only. Rogue Research Lab LLC makes no claims as to the consumer safety or other risks associated with any detected or non-detected amounts of any pesticides, solvents or other adulterants. This report shall not be reproduced, unless in its entirety, without written approval from Rogue Research Lab LLC. Samples were received in good condition and all QC samples met acceptance criteria of the method; data available upon request. Analytes accompanied by dagger (‡) are not within the scope of accreditation and are for informational purposes only.



Client Gold Standard
Sample Bubba Kush
Sample ID 20113000724

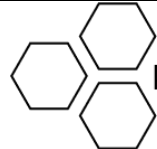
Sample Extracted
11/28/20 10:10

Pesticides Batch 021128-01 Results

Analyte	LOQ, PPM	Limit, PPM	Status	Analyte	LOQ, PPM	Limit, PPM	Status
Abamectin	0.250	0.500	Pass	Hexythiazox	0.500	1.000	Pass
Acephate	0.200	0.400	Pass	Imazalil	0.100	0.200	Pass
Acequinocyl	1.000	2.000	Pass	Imidacloprid	0.200	0.400	Pass
Acetamiprid	0.100	0.200	Pass	Kresoxim Methyl	0.200	0.400	Pass
Aldicarb	0.200	0.400	Pass	Malathion	0.100	0.200	Pass
Azoxystrobin	0.100	0.200	Pass	Metalaxyl	0.100	0.200	Pass
Bifenazate	0.100	0.200	Pass	Methiocarb	0.100	0.200	Pass
Bifenthrin	0.100	0.200	Pass	Methomyl	0.200	0.400	Pass
Boscalid	0.200	0.400	Pass	Methyl Parathion	0.100	0.200	Pass
Carbaryl	0.100	0.200	Pass	MGK-264	0.100	0.200	Pass
Carbofuran	0.100	0.200	Pass	Myclobutanil	0.100	0.200	Pass
Chlorantraniliprole	0.100	0.200	Pass	Naled	0.500	1.000	Pass
Chlorfenapyr	0.500	1.000	Pass	Oxamyl	0.500	1.000	Pass
Chlorpyrifos	0.100	0.200	Pass	Paclobutrazol	0.200	0.400	Pass
Clofentezine	0.100	0.200	Pass	Permethrins	0.100	0.200	Pass
Cyfluthrin	0.500	1.000	Pass	Phosmet	0.100	0.200	Pass
Cypermethrin	0.500	1.000	Pass	Piperonyl Butoxide	1.000	2.000	Pass
Daminozide	0.500	1.000	Pass	Prallethrin	0.100	0.200	Pass
DDVP	0.500	1.000	Pass	Propiconazole	0.200	0.400	Pass
Diazinon	0.100	0.200	Pass	Propoxur	0.100	0.200	Pass
Dimethoate	0.100	0.200	Pass	Pyrethrins	0.500	1.000	Pass
Ethoprophos	0.100	0.200	Pass	Pyridaben	0.100	0.200	Pass
Etofenprox	0.200	0.400	Pass	Spinosad	0.100	0.200	Pass
Etoxazole	0.100	0.200	Pass	Spiromesifen	0.100	0.200	Pass
Fenoxycarb	0.100	0.200	Pass	Spirotetramat	0.100	0.200	Pass
Fenpyroximate	0.200	0.400	Pass	Spiroxamine	0.200	0.400	Pass
Fipronil	0.200	0.400	Pass	Tebuconazole	0.200	0.400	Pass
Flonicamid	0.500	1.000	Pass	Thiacloprid	0.100	0.200	Pass
Fludioxonil	0.200	0.400	Pass	Thiamethoxam	0.100	0.200	Pass
				Trifloxystrobin	0.100	0.200	Pass

[Rogue Research Lab LLC](#)
[218 E. Main Street, Rogue River, OR 97537 Tel. 541-582-1962](#)
[ORELAP 4107 OLCC 101050708B](#)
[rogueresearchlab.com](#)

Craig Berry - Lab Director



Results pertain to submitted samples only. Rogue Research Lab LLC makes no claims as to the consumer safety or other risks associated with any detected or non-detected amounts of any pesticides, solvents or other adulterants. This report shall not be reproduced, unless in its entirety, without written approval from Rogue Research Lab LLC. Samples were received in good condition and all QC samples met acceptance criteria of the method; data available upon request. Pesticide testing provided for information only as the sample was not obtained using regulated sampling methods.



Client Gold Standard
Sample Bubba Kush
Sample ID 20113000724

Pesticides Batch 021128-01 QA Recovery limits

Analyte	%Recovery	Recovery limits	Analyte	%Recovery	Recovery limits
Abamectin	102.5	50-100	Hexythiazox	112.4	50-100
Acephate	105.4	50-100	Imazalil	58.1	50-100
Acequinocyl	94.8	50-100	Imidacloprid	109.5	50-100
Acetamiprid	141.8	50-100	Kresoxim Methyl	68.0	50-100
Aldicarb	83.1	50-100	Malathion	103.1	50-100
Azoxystrobin	103.7	50-100	Metalaxyl	110.7	50-100
Bifenazate	106.5	50-100	Methiocarb	90.3	50-100
Bifenthrin	101.8	50-100	Methomyl	102.1	50-100
Boscalid	135.4	50-100	Methyl Parathion	133.3	50-100
Carbaryl	115.9	50-100	MGK-264	145.7	50-100
Carbofuran	85.5	50-100	Myclobutanil	128.4	50-100
Chlorantraniliprole	84.6	50-100	Naled	98.5	50-100
Chlorfenapyr	63.3	50-100	Oxamyl	143.0	50-100
Chlorpyrifos	82.7	50-100	Paclobutrazol	55.0	50-100
Clofentezine	88.0	50-100	Permethrins	90.7	50-100
Cyfluthrin	120.8	50-100	Phosmet	99.8	50-100
Cypermethrin	98.7	50-100	Piperonyl Butoxide	121.0	50-100
Daminozide	88.4	50-100	Prallethrin	106.7	50-100
DDVP	84.6	50-100	Propiconazole	139.6	50-100
Diazinon	86.8	50-100	Propoxur	95.4	50-100
Dimethoate	94.1	50-100	Pyrethrins	98.4	50-100
Ethoprophos	93.5	50-100	Pyridaben	118.7	50-100
Etofenprox	97.5	50-100	Spinosad	101.9	50-100
Etoxazole	118.2	50-100	Spiromesifen	102.9	50-100
Fenoxycarb	100.2	50-100	Spirotetramat	113.9	50-100
Fenpyroximate	106.3	50-100	Spiroxamine	103.6	50-100
Fipronil	91.6	50-100	Tebuconazole	88.2	50-100
Fonicamid	86.6	50-100	Thiacloprid	95.1	50-100
Fludioxonil	72.6	50-100	Thiamethoxam	86.4	50-100
			Trifloxystrobin	89.6	50-100

[Rogue Research Lab LLC](#)
[218 E. Main Street, Rogue River, OR 97537](#)
[541-582-1962](#)
[ORELAP 4107 OLCC 101050708B](#)
[rogue-research-lab.com](#)

Craig Berry - Lab Director



Results pertain to submitted samples only. Rogue Research Lab LLC makes no claims as to the consumer safety or other risks associated with any detected or non-detected amounts of any pesticides, solvents or other adulterants. This report shall not be reproduced, unless in its entirety, without written approval from Rogue Research Lab LLC. Samples were received in good condition and all QC samples met acceptance criteria of the method; data available upon request. Pesticide testing provided for information only as the sample was not obtained using regulated sampling methods.



Client Gold Standard
Sample Bubba Kush
Sample ID 20113000724

Mycotoxins

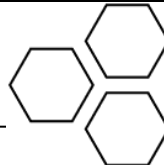
Analyte	Result	LOQ, PPB	Action level	Status
‡ Aflatoxin B1	<LOQ	2.000	5*	Pass
‡ Aflatoxin B2	<LOQ	2.000	5*	Pass
‡ Aflatoxin G1	<LOQ	2.000	5*	Pass
‡ Aflatoxin G2	<LOQ	2.000	5*	Pass
‡ Ochratoxin A	<LOQ	10.000	20	Pass

* sum of measured aflatoxins must be < 20 PPB to pass the action level limits.

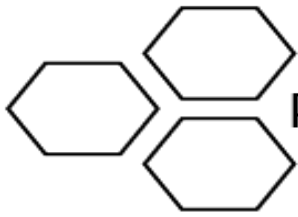
/// End of Report

[Rogue Research Lab LLC](#)
[218 E. Main Street, Rogue River, OR 97537](#)
[541-582-1962](#)
[ORELAP 4107 OLCC 101050708B](#)
[rogueresearchlab.com](#)

Craig Berry - Lab Director



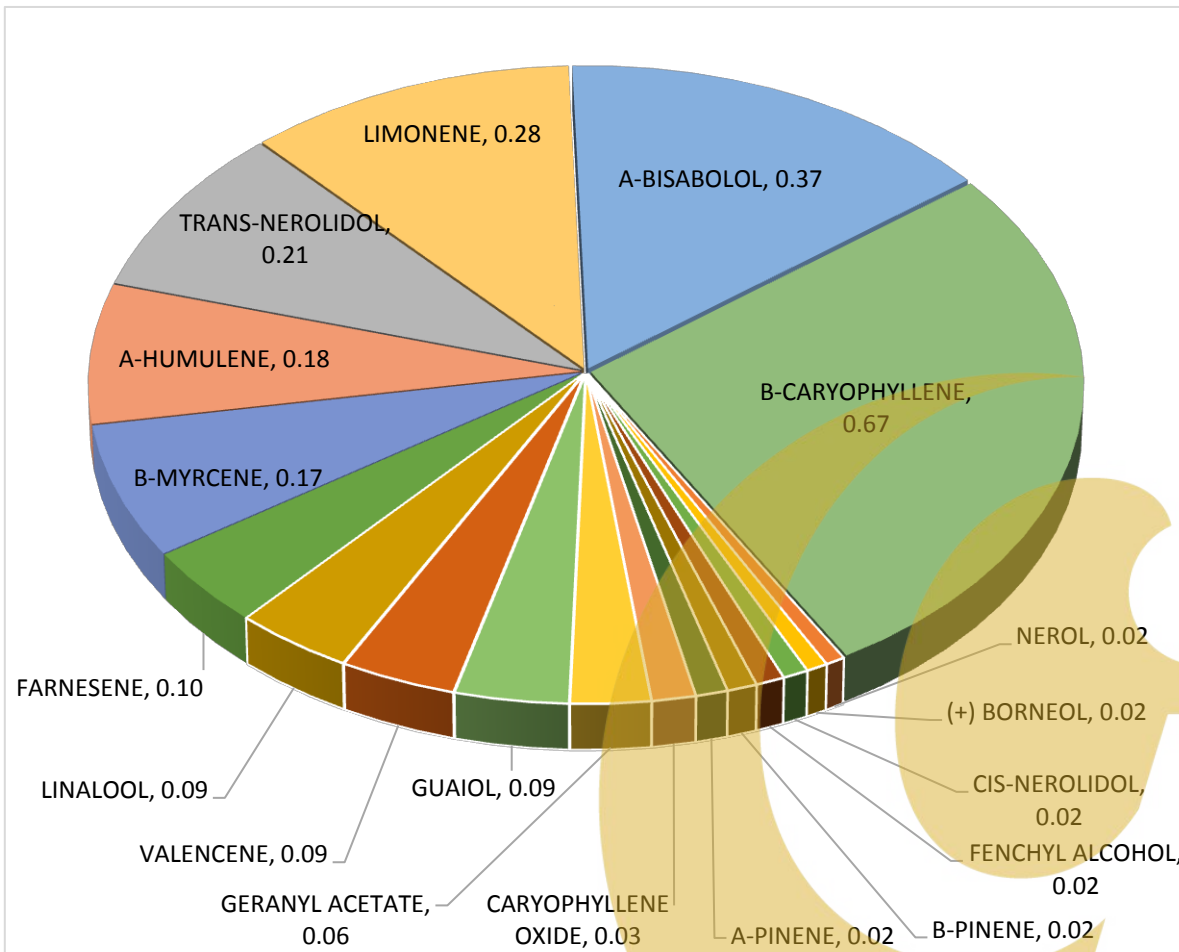
Results pertain to submitted samples only. Rogue Research Lab LLC makes no claims as to the consumer safety or other risks associated with any detected or non-detected amounts of any pesticides, solvents, metal or other adulterants. This report shall not be reproduced, unless in its entirety, without written approval from Rogue Research Lab LLC. Samples were received in good condition and all QC samples met acceptance criteria of the method; data available upon request. Dagger (‡) indicates not ORELAP accredited analytes. If present, metals analysis performed by Humboldt Quality Assurance Laboratory. Metals and mycotoxin action levels from California Law. Metals and mycotoxins provided for information only.



Terpene Analysis

Customer Gold Standard
Sample Name Bubba Kush
File Name 20113000724
Date/Time Extracted: 11/20/2020 14:25
Date/Time Analyzed: 11/22/2020 17:21
Analysis Method/SOP: SOP LO-012R1/R191118

TESTED FOR : (-) BORNEOL,(+) BORNEOL, A-BISABOLOL, A-CEDRENE, A-HUMULENE, A-PHELLANDRENE, A-TERPINENE,A-TERPINEOL,B-CARYOPHYLLENE,B-MYRCENE,A-PINENE,B-PINENE, 3-CARENE,CAMPHERE,(1R) (+) (-)CAMPHOR, 1S)(-)(-)CAMPHOR, CAMPHOR, CARYOPHYLLENE OXIDE, CEDROL,CIS-NEROLIDOL, DL-MENTHOL ,EUCALYPTOL, FARNESENE,(-) FENCHONE, (+) FENCHONE,FENCHYL ALCOHOL,GERANIOL, GERANYL ACETATE,TERPINENE, GUAIIOL,ISOBORNEOL,ISOPULEGOL, LIMONENE,LINALOOL,NEROL, OCIMENE, PULELONE, SABINENE, SABINENE HYDRATE, TERPINOLENE, TRANS-NEROLIDOL,VALENCENE.



Craig Berry
Craig Berry - Lab Director

12/1/2020

Terpene total w/w% 2.50

PharmLabs San Diego Certificate of Analysis

3421 Hancock St, Second Floor, San Diego, CA 92110 | License: C8-0000098-LIC
 ISO/IEC 17025:2017 Certification L17-427-1 | Accreditation #85368



Sample **Delta 8 Distillate**

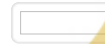
Sample ID	SD210302-024 (41634)	Matrix	Distillate - NI (Other Cannabis Good)
Tested for	Gold CBD		
Sampled	-	Received	Mar 01, 2021
		Reported	Mar 03, 2021
Analyses executed	CAN+		

CAN+ - Cannabinoid Profile Analysis

Sample photography

Analyzed Mar 03, 2021 | Instrument HPLC-VWD | Method SOP-001

Analyte	LOD mg/g	LOQ mg/g	Result %	Result mg/g
Cannabidivarin (CBDV)	0.002	0.8	ND	ND
Cannabidiolic Acid (CBDA)	0.001	0.012	ND	ND
Cannabigerol Acid (CBGA)	0.001	0.012	ND	ND
Cannabigerol (CBG)	0.001	0.012	ND	ND
Cannabidiol (CBD)	0.001	0.012	ND	ND
Tetrahydrocannabivarin (THCV)	0.001	0.003	ND	ND
Cannabinol (CBN)	0.001	0.012	0.29	2.90
Tetrahydrocannabinol (Δ9-THC)	0.003	0.012	ND	ND
Δ8-tetrahydrocannabinol (Δ8-THC)	0.004	0.012	94.99	949.92
Cannabicyclol (CBL)	0.002	0.006	0.24	2.44
Cannabichromene (CBC)	0.002	0.005	0.31	3.07
Tetrahydrocannabinolic Acid (THCA)	0.001	0.012	ND	ND
Total THC (THCa * 0.877 + THC)			ND	ND
Total CBD (CBDA * 0.877 + CBD)			ND	ND
Total CBG (CBGa * 0.877 + CBG)			ND	ND
TOTAL CANNABINOIDS			95.83	958.30



ND Not Detected
 N/A Not Applicable
 NT Not Reported
 LOD Limit of Detection
 LOQ Limit of Quantification
 <LOQ Detected
 >ULOL Above upper limit of linearity
 CFU/g Colony Forming Units per 1 gram
 TNTC Too Numerous to Count



Scan the QR code to verify authenticity.

Authorized Signature

Dr. Lia Prevedello, Laboratory Director
 Wed, 03 Mar 2021 14:06:10 -0800